

Papworth Team Ministry Profile



A message from the acting bishop of Ely

Dear Colleague,

Thank you for your interest in the Papworth Team, a harmonious group of parishes set in pleasant rural Cambridgeshire. It has well-established and effective systems of organisation and administration which, along with able, committed and supportive lay people, makes it a "doable job" for two stipendiary clergy.

The benefice profile sets out well the needs and opportunities of the Team. As bishop, I would also draw attention to the diocesan priorities: to engage with our communities; to grow the church, nurturing disciples and equipping leaders; and to deepen our relationship with God through word, worship and prayer.

I pray for a new Team Rector who will draw deeply on the wells of scripture and tradition to proclaim the gospel afresh in this generation and to guide the ministry and mission of the group; a godly person who will help others to grow in godliness.

May the Lord guide your discernment.

+Dagmar



Our prayer

Dear Lord

We give thanks for each of the fifteen churches of the Papworth Team who bear witness to your love as they serve and worship in your name.

Guide and bless our efforts to seek a new Team Rector and so start a new chapter in the life of the Team.

Help us to convey the strengths and challenges facing the Papworth Team;

to engage with local communities and families as we grow your church;

and continue to be sensitive to the needs and concerns of the vulnerable and elderly.

In all things hold us true to your Gospel of love and compassion and the promise of your Kingdom.

We pray this in Jesus' name.

Amen

Introduction

The Papworth Team Ministry is a benefice that has been established for nearly 25 years. It comprises some 15 parishes, mostly small rural communities, and the much larger village of Papworth Everard. We are seeking a new Team Rector to lead us as we strive to grow in faith, mission and action.

Located to the west of Cambridge in rolling countryside, the area offers good schools and easy access to both Cambridge and, via nearby rail stations, easy transport to London, Peterborough and beyond. There is an extensive footpath network for those who wish to walk or cycle. Nearby Fen Drayton lakes is a renowned RSPB reserve.

The area has a good selection of supermarkets and other shops at nearby St Ives, Bar Hill, Cambourne and St Neots. In addition, many villages have convenience stores, butchers and farm shops.

The Papworth Team is set in an exciting area of growth and opportunity on the edge of Cambridge. The coming decade is likely to see extensive expansion in residential, commercial and research facilities as Cambridge and the surrounding area continue to see growth.

With historic architecture and cultural nightlife and an eclectic selection of shops, restaurants and cafés, Cambridge is a popular destination and has something for everyone.



Cambridge city



Elsworth
Midsummer Fizz
night



Concert in
Kingston church

The person we seek

The key attributes that we seek in our new Team Rector are:

- **A Godly person**, whose life and doctrine are in keeping with Holy Scripture;
- **An ability to lead and motivate a team.** We are blessed with many willing and able people and our new Rector needs to enable and encourage them;
- **An able preacher and leader of Bible study;**
- **An understanding of rural church;**
- Supportive of working with **children and young people;**
- **A flexible approach** to a group of parishes with a variety of approaches to worship and mission;
- **A commitment to developing lay ministry** as we seek to encourage more lay involvement in worship and pastoral ministry



A winter wedding at Lolworth



Sunday service at Papworth

The Papworth Team Ministry

The Papworth Team consists of the parishes of: Bourn, Boxworth, Caxton, Conington, Croxton, Elsworth, Eltisley, Graveley with Papworth St Agnes, Kingston, Knapwell, Lolworth, Longstowe, Papworth Everard, Toseland and Yelling.

It was formed in July 2000 as a benefice of 13 parishes. In the past four years, the parishes of Conington and Lolworth were added after pastoral reorganisation in the neighbouring Northstowe Deanery.

The team forms the western half of Bourn Deanery within the Archdeaconry of Cambridge. The Lordsbridge Team comprising 12 parishes forms the eastern half. The Local Ecumenical Project at Cambourne (a large and growing new town) is the third part of the Deanery. The Rural Dean is the Ven Hugh McCurdy.

Two new major housing developments are currently underway to extend Cambourne on its east and west sides. Some of the land being developed lies within the parishes of Bourn and Caxton.



The Role of The Team Council

The Team Council consists of one nominated representative from each PCC and meets four times a year. The meeting is chaired by the Team Rector supported by a lay vice chair with attendance and input from the Team Vicar, Team Treasurer and other clergy. Minutes are taken on all key decisions and circulated via the team representatives to all PCCs.

Main topics of discussion centre around patterns and types of service together with all financial matters both team and ministry share. Addressing the needs of PCCs and sharing common challenges and best practice are also covered.

Over the past 10 years the Team Council has been very successful in supporting the parishes, both from a practical (church fabric) and ministry perspective. A culture of openness and transparency remains at the heart of our values and to this end we continue to receive positive feedback from participants.

Practical examples of this support are:

- Buildings' insurance negotiated at a team level resulting in greater cover and lower premiums;
- Ministry share negotiated at a team level;
- Adopting common processes across the team;
- Financial and practical support to enable local initiatives to flourish;
- A forum for PCC treasurers to collectively agree yearly budgets;
- Monitor and administer compliance with our safeguarding policy;
- Provide a consistent approach to other key policies (e.g. Health & Safety, etc);

The Team Instrument can be found in Appendix 1



Summer garden party in Knapwell



Village coffee morning at Caxton

Schools

There are two Church of England Primary Schools within the benefice – in Bourn (c. 200 pupils) and in Elsworth (c. 130 pupils). There is a large community Primary School in Papworth Everard and a smaller one in Eltisley.

There are weekly visits with input to Collective Worship in Bourn and Elsworth – including using the ‘Open the Book’ style of assembly with lay-led contribution. Whole school church services are the norm once or twice a term. Visits to Papworth and Eltisley are less frequent. However, there are occasional visits, including school services held in our churches.

There is a strong encouragement for clergy to be *ex-officio* school Governors in Bourn and Elsworth. This has not been practicable in recent times but affords a future opportunity.

In the southern part of the benefice there has been past engagement through the West Cambridge Churches Youth Ministry (WCCYM) which supports outreach at the Village Colleges in Comberton and Cambourne which serve our area. We believe there is considerable opportunity to develop further engagement with secondary school students.



Bourn
CofE
Primary
Academy



Elsworth
CofE
Primary
School

The Team

Once appointed the Team Rector will have the task of recruiting a Team Vicar to share the workload. In addition, there are a significant number of enthusiastic people – lay and ordained – who support the work of the Team Rector including:

Canon Sarah Burles is an authorised lay minister based in Eltisley where she leads the popular breakfast service. Sarah is a member of Ely Cathedral Chapter and is a leader of the Women's group. By profession, Sarah is an art historian, lecturer and tour leader. Sarah now runs Cambridge Art Tours, which offers art tours and courses, in person and online.



Amanda Norman is an LLM who mainly supports worship in Longstowe. Amanda's professional role is in senior management in the Leprosy Mission, a charity the Team supported recently by raising £8,000 to fund a new laboratory in Nepal.



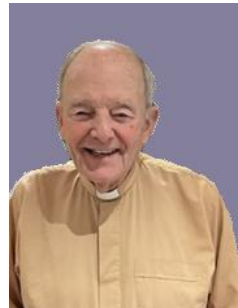
David Potter is an Authorised Lay Minister (Worship Leader) based in Papworth Everard where he is also the church warden. David leads the family worship team in Papworth. He is a retired Chartered Town Planner and Chartered Surveyor.



Canon Professor Russell Cowburn is an Occasional Lay Preacher who supports services in Caxton. He works as a physicist at the University of Cambridge, where he is also a trustee of the University's Faraday Institute for Science and Religion. He is Honorary Canon Scientist in the diocese of St Albans.



Revd Nigel Pearson, Associate Priest, who has served in the Team for over a decade. Nigel and his son farm in the parish of Caxton. He also sits on the Diocesan Investment Committee and is a member of the Diocese's Rural Ministry and Mission Group.



Revd Chris Westgarth is the Team Administrator, based in our Papworth office. She also serves as an Associate Priest in the Lordsbridge Team. Chris also volunteers as a Chaplain in Addenbrookes Hospital and is involved in nature recovery projects.



Revd Geoff Dodgson, Associate Priest, who served for many years as a Reader in rural parishes before being ordained in 2020 and joining the Team. Geoff is heavily involved in rural ministry. He is Chaplain to both the British Guild of Agricultural Journalists and the Worshipful Company of Farmers; he also sits on the national committee of the Agricultural Chaplains Association.



Anne Pettifor is an ALM (Pastoral) working across the team overseeing visits to the elderly and housebound. Anne delivers 'Open the Book' in local schools and assists in our weekly phone worship. Anne has extensive experience in Crown/Magistrates and Coroners Courts supporting vulnerable witnesses.



Over the years, the Team has provided placement experience to ordinands from colleges within the Cambridge Theological Federation. In addition, Sunday worship is supported by a number of clergy who live locally.

Whole team events and activities

Every fifth Sunday, there is one service held for the whole benefice, which has grown in attendance over the past two years. These services may be themed and provide opportunities for guest preachers.

A legacy from Covid is Morning Prayer held on Zoom at 8.15am Monday to Saturday with 10-15 regulars. Every Monday evening, we host a telephone service to meet the needs of those without computer facilities or capabilities. Currently attendance is 12-16 and occasional guest preachers join us.

Seasonal activities include Bible study groups and Compline services in Lent and Rogation 'rambles', reflecting the rural nature of much of the Team. 'Rendezvous' is our summer 'holiday camp' where we entertain 50 or so guests for two days in Papworth Village Hall. Once we have a full complement of stipendiary clergy, we believe there is scope to extend the mission of these and similar activities.

Many of our churches have regular organists, whose role is supplemented by professionals in some parishes. In 2024, a Team Choir was formed to sing at Team Services and other events. Participants are drawn from ten parishes. Other 'occasional' choirs have emerged in recent years to support services such as harvest and carol services.

A team-wide prayer group has been formed in 2024 which meets every three weeks.

Most of the Ministry Team meet monthly in the Team Office to share news, experience and fellowship.



Open air team service at Eltisley



Harvest supper at Boxworth

Team-operation

While each parish is run by its own PCC, all are supported by the Team in several ways:

Each parish pays a Team Share (in 2024 this was £31,000 in total) which funds the Team Administrator, clergy expenses, printing, communion supplies and so on. This removes much of the administration burden from individual PCCs. For instance, all invoices for occasional offices are issued centrally with monies allocated, as appropriate to parishes, Diocesan Board of Finance, organists, etc.

The Team office in Papworth Everard is a valuable resource serving all 15 parishes and PCCs. The office provides printing facilities and secure storage. It is also a venue for regular meetings of the Team Council, the Ministry Team, the Safeguarding Core Team and PCC treasurers. It also serves as a warm space for Bible study and other *ad hoc* events and gatherings. The office location provides an opportunity to increase our presence in Papworth Everard, which is our largest parish.

Safeguarding is well supported across the parishes, with high compliance with the needs for DBS checks and learning by the majority of PCC members. The core safeguarding team comprises the Team Rector and two experienced Parish Safeguarding Officers, who meet quarterly. The PSOs enjoy a strong relationship with the relevant team in the Diocesan Office.

Appendix 2 lists the statistics of services in each individual parish.



Open-air pet service at Longstowe



Open-air pet service at Yelling

Finances

The annual accounts of the parishes for 2023 show:

Total income for the Parishes was £563,976, ranging from £3,654 to £285,190 per parish. The variance, in part, reflects some sizeable grants received for restoration projects by certain parishes. The median income per parish for 2023 was £21,994 against expenditure of £20,149. The parishes therefore achieved a median net surplus of income over expenditure of £1,845 per parish.

Total assets – cash and investments – in parish accounts totalled £1,074,048 (an overall increase over 2022), with a range from £794 to £416,196 (median: £30,649) per parish. Much of these reserves are held to fund future building projects.

Ministry Share – the agreed total sum due to be paid to the Diocese in 2025 is £119,000. It is expected to be met in full.

Team accounts:

There is a strong governance ethic. All payments from Team accounts have to be authorised by two people. Over the past five years reserves have increased and have now stabilised at c. £33,000 and Team share contribution from the parishes has been reduced. Independently examined annual accounts are produced every year. For 2023's team accounts see Appendix 4.

In summary, the Team finances are well run and in a healthy position.



Plant sale at Yelling

Wedding in Conington



Elsworth Rectory

We appreciate that this will be your home and is an important part of this profile. We can offer a modern (approx. date of construction 2000), well-equipped house.

Elsworth Rectory is a large six-bedroom, detached, purpose-built home on The Drift in Elsworth. It is set beside the Church on a quiet road near the centre of the village. It enjoys privacy in a tranquil rural environment.

Full details of the Rectory are in Appendix 3.



The Elsworth Rectory

View over the Elsworth Rectory glebe field



Living in Elsworth

Elsworth, a village of 320 homes, has become a much sought after location for families seeking a country lifestyle with good access to Cambridge and St Neots which have fast train connections to London. Accommodation ranges from historic and picturesque thatched cottages, to the mobile home Constellation Park plus more modern in-fill developments.

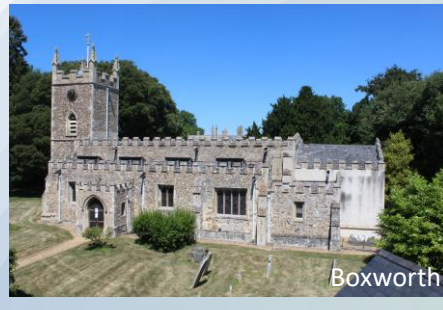
The village has a successful Church of England primary school. It was rated 'Good' in recent Ofsted and SIAMS inspections. The SIAMS report concluded 'The school has a rich curriculum that makes pupils curious and eager to ask questions...'. With a roll of 125 children, the school's sustainability relies on attracting children from out of catchment. An independent pre-school operates in the school grounds.

There are two pubs, a community shop and a sports club with a large playing field in the centre of the Village. A visiting post office comes once a week. Frank's Farm, a destination food hub, opened recently in converted farm buildings and provides a café, bakery, delicatessen and butcher. There are two small business parks in the village; one adjacent to Frank's Farm and the other in a converted former prisoner of war camp, which housed Italian prisoners during the Second World War and now owned and managed by our village charity, the Samuel Franklin Fund. This Fund aids needy parishioners at Trinity and Christmas, but also supports the school, pre-school and older students. The Rector, having a unique perspective on the needs of families, has traditionally been an ex-officio member of its grants committee.

The Elsworth and District show in early September engenders intense competition for the prizes and cups in many classes.



Bourn



Boxworth



Caxton



Conington



Knapwell



Kingston



Graveley

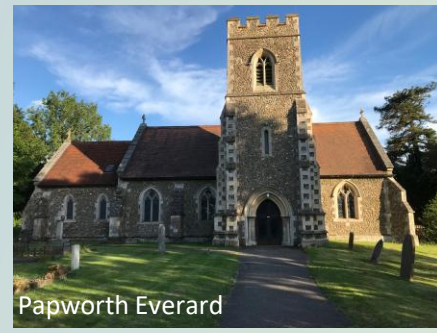


Elsworth

The Parishes



Eltisley



Papworth Everard



Croton



Yelling



Lolworth



Longstowe



Toseland

St Helena & St Mary's Church, Bourn

Bourn has a true village identity. With a population of about 900 it has a Church of England Primary Academy and a day nursery, Little Hands.

Excellent local amenities include a GP surgery, shop and post office, coffee shop and cafe (The Stove), a bakery and butcher, gastropub (the Willow Tree), an Indian restaurant (Lalbagh), a well-maintained sports and recreation ground with play area, an historic Barn which host community-based events, a nearby golf club with gym, and allotments. About 60 businesses operate from the village. There is a vibrant Sports Club, local Scout group, Garden Club, children's dance classes and Merrybourn for older residents. It is twinned with St Papoul, southern France. For further information – www.bourn.org.uk

The sense of our community is held together with an excellent monthly magazine, compiled with the Church front and centre of its focus.

Our churchmanship is central Anglican. The Church has three regular monthly services, two of Holy Communion and a more informal 'Worship for All'. We provide coffee and biscuits after services to welcome new people and share our hopes and troubles as a Church family. There is a children's corner in the North Chapel and craft activities are offered following the 'Worship for All' services. The Remembrance Service with reflection at the War Memorial and involvement of the Scouts, is always well attended. A knitted Posada, co-ordinated by the school, is popular with families in the run-up to the popular Crib Service. and 'Carols in the Barn' attracts families who don't otherwise attend the Church.

The whole school visits for an early morning service twice a term, often with their own orchestra and choir, and some parents. Our previous vicar ran a Happy Sad Club after school. We have also hosted GenR8 (a Cambridge-based Christian charity working with primary schools). The local Little Hands nursery visits informally for Harvest, Remembrance, Christmas and donating to the Food Bank.

We manage donations for the village Food Bank collection. The Christian Aid envelope collection was done via the team this year. The Church provides a good backdrop for concerts and a well-attended Garden Club talk.

We held a Church fundraising Fayre at the Village Hall which was very well supported by the wider community; as was a Christmas coffee morning held in the Church.

Volunteers fulfil reading, flower arranging and cleaning roles, and keep the Church open every day.

The church is often used for Team-wide services. We have a heating system and use kitchen or toilet facilities at the Village Hall. We have the choice of a piano or organ and a comprehensive sound system with a portable microphone. There is a good set of eight bells which attracts visiting ringers and our own band of ringers also ring at Caxton.

St Peter's, Boxworth

St. Peter's, Boxworth has a committed congregation of between 10 and 15 regular congregants at three services a month: 8.30am Holy Communion, 10.45am Holy Communion, and 10.45am Morning Prayer. Easter, Harvest, Carol and Christmas Services each attract between 50 and 70 attendees. We have two churchwardens and 10 members of the PCC.

Our beliefs, values and practice are relatively traditional and rooted in the Bible: we are here to 'love God and love people.' In Sunday services this is expressed through bible reading, prayer, eucharist, liturgy and hymns. Throughout the week we care for each other and others in the village pastorally. There is an annual Christmas lunch held for the older members of the community.

Boxworth has around 220 residents, several of whom help on a regular basis with cleaning the church, arranging the flowers, and maintaining the churchyard. The village comprises both long-term residents and some more recently arrived including a few young families. We would like to reach out to more people in the village including some of the younger families and would welcome the opportunity to explore how this could happen.

The building itself dates back to the 11th century with more recent additions being Victorian. Structurally it is in good repair and funding has been raised to address the outstanding issues highlighted in the latest quinquennial inspection. The funding has been raised through a combination of donations from the village, grants and fundraising events eg murder mystery, open air theatre and barn dances. We anticipate this work being carried out in 2025. The church has Kempe stained glass windows and an historically important Holditch organ. It is hoped that next year we will be able to undertake restoration of the organ.

St Andrew's Church, Caxton

St Andrew's Church, Caxton lies on the edge of the small village of Caxton, 9 miles to the west of Cambridge. The village is home to approximately 800 people.

There is a pub/restaurant, some farms and a couple of small businesses. There is no typical Caxton resident – farmers, doctors, nurses, service industries staff, CEOs and retirees all call Caxton home.

The church congregation is small but lively – there is a full PCC and two churchwardens and we usually have three Sunday morning services per month. Caxton church is well known for its informality, warm welcome and friendliness, and for combining a range of styles of services; in most months there is a BCP-style Holy Communion, a family service and a contemporary Morning Prayer with a strong focus on expository Bible teaching. Our music blends traditional hymns with modern writers such as Stuart Townend.

We try to reach out to the local community of Caxton and beyond with the good news of Jesus through our regular services and with our monthly coffee mornings, an annual wine tasting evening (which also raises money for Christian charities) and festival services such as a Christmas Carol service, a Remembrance Sunday service and a Harvest Festival. While normal Sunday attendance is in the range of 10-20, festival services often attract 70. We have plans for a *Christianity Explored* Bible study group.

Showing practical love and concern to our neighbours is also a priority in Caxton – in recent years we have started a 'parish pantry' foodbank, deliver local prescriptions and take retiring collections after major services for the Trussell Trust foodbank and some homelessness charities.

We have a good set of church bells which is regularly rung by local and visiting ringers and we have a high quality, modern electronic church organ.

Caxton church building, which in general is in a good state of repair, is one of the few in the Papworth team to have a kitchen and toilet, following a major reordering project a few years ago. The building also has comfortable, moveable chairs throughout, oil-fired central heating, a recently installed sound system and a data projector. Consequently, we often host musical events provided by local choirs such as Sing Papworth and Cambourne Community Gospel Choir.

Although we currently have very few children regularly attending Sunday services, we would love to expand the number of families in our congregation and provide a Sunday School.

The church is in a good financial position with sound investments.

St Mary's Church, Conington

Conington is a small parish with a population of around 140. It has no school or shops, but it does have a church and a pub.

There are three working farms along with some small businesses located on these farms. However, many of the population work elsewhere. Children in the village mostly attend the Church of England Primary school in Elsworth and then Swavesey Village College.

There is a strong sense of community in the village, with a number of events organised each year, such as the annual cricket match against Elsworth.

St Mary's Church uses traditional language worship for its main services, which is important to the congregation. The monthly family Eucharist is well-supported by families taking turns in reading and providing refreshments. On Christmas morning mulled wine provides an added attraction.

An annual harvest supper is held in the Church, attracting about 40 people. In recent years, this event has raised significant funds for charities, such as the Gaza orphans' fund. Carol singing around the village is also popular, again raising funds for local charities, including the foodbank.

The Church is very widely supported by the village with many, who do not regularly worship, helping with cleaning, church yard maintenance, grass cutting, etc.

The Church is unlocked during the day and attracts both tourists and those who seek some solace, as remarks in the visitor's book reflect. It is also used for Macmillan coffee mornings and craft fairs.

The fabric of St Mary's is in fair condition and regularly maintained. However, the latest Quinquennial inspection raised several issues. Currently, costs are being sought for the necessary external work. Once this is completed, the aim is to redecorate the interior.

St James' Church, Croxton

St James' Church is based on the Croxton Park Estate, away from the village - the village was moved to its current location in the early 1800's. Access to the church is across two cattle grids, just under half a mile from the High Street. The church is therefore not visible to villagers and has done well to both retain and attract a congregation. Croxton has no facilities, other than the church and a small village hall. The population is around 160 people with most people of working being employed away from the village.

Usually, two services a month are held, alternating between Holy Communion and Morning Prayer. Festival Services are well attended as is "Carols on the Green" held just before Christmas where food and mulled wine is often provided by the villagers.

In 2023 a Bible Study Group was established in the village and continues to meet regularly.

The church charitable giving includes monthly to "World Vision" and to the St Neots Foodbank (Harvest Festival) and Jimmy's Night Shelter in Cambridge (Christmas Carol Service Collection).

The church is one of three in the Bourn Deanery which is featured in "Churches of Cambridgeshire" (John E. Vigar 2023). The tower houses 6 bells which have recently been serviced and new ropes added in 2024. Some of the pews are very old and were allegedly chewed by Cromwell's cavalry horses during the Civil War. Also of note is the tomb in the churchyard of Queen Elizabeth II's great grandfather, the Revd. Charles Cavendish Bentinck. Inside the church there are the remains of medieval wall paintings and some interesting stained glass.

Fundraising is an on-going challenge, both to encourage regular giving and through specific events. A QR code provided by PGS specifically for St James' to encourage on-line donations is now being used with some success. A successful concert by the "Faith Alive Choir" was held in August which raised over £800.

As with all ancient churches, ongoing maintenance is paramount. The current focus is inspecting the roof and repairing where necessary.

St James' is a special place with a medieval atmosphere unique to this area. It is surrounded by parkland, ideal for those seeking a quiet place for prayer and reflection.

Holy Trinity Church, Elsworth

Whilst not the largest village in the Papworth Team, Elsworth does have one of the larger churches in the Team. Structurally, the Grade 1 listed building is in reasonable condition. In recent years the roof has been completely repaired and re-leaded and the South Porch completely restored. Despite spending over £350,000 on the building in the last 25 years, the interior of the church has hardly changed, although it has dried out a bit and as a result become a little warmer. There are some radiant and under-pew heaters, but they have only limited effect in such a large building.

Today the PCC has a project to provide a new vestry, and a disabled access toilet in the base of the tower, a kitchen in the south aisle and a larger open meeting and gathering space created by the removal of some of the pews from the back of the nave. The faculty for this project was granted earlier this year, subject to some tricky conditions surrounding the stabilisation of a Georgian reredos now situated at the back of the Church.

There is an active group of largely non-churchgoing villagers who support the church in many ways. In addition to the many people who help with flower arranging, bell ringing and maintaining the churchyard, a small group recently set up 'Access Elsworth' to attempt to support the fundraising efforts for the re-ordering of the Church. Access holds several events each year including a plant sale, a potato grow-off, a safari supper and mid-summer wine tasting in the churchyard. In response to the enthusiasm shown by Access, the PCC has committed £75,000 of its reserves to this project, initially to cover the architects' fees, faculty and tender processes and is now seeking further funding from other grant awarding bodies. This should leave the PCC with reserves of approximately £50,000.

We do not generally serve coffee after any of our three services each month; 11.00am and 6.00pm services ending a little too close to Sunday mealtimes, but we make a point of having mulled wine after our Carol Service. This is a popular service, not just for the wine, but also because it always features a scratch choir, which also sings at our patronal festival and at Harvest. Our Harvest Supper, in the Sports Pavilion is generally attended by around 50 people.

The Church, in association with the Community Shop, co-ordinates a collection for the Huntingdon Food Bank, and a dedicated team of cyclists takes part in the annual Ride and Stride for the Cambridgeshire Historic Churches Trust which has supported restoration work at Holy Trinity.

St Pandionia & St John the Baptist, Eltisley

Eltisley is a small village of approximately 180 houses. As well as our lovely church we have a pub, the Cade Pavilion on the Green, and a primary school. The population of the village is aging with properties too expensive for most young people and the school roll has dipped dramatically in the past 10 years. Some affordable housing is currently being built in the village which we hope will result in some young families moving in. The A428 bypass that is currently also under construction is adversely affecting traffic flow in and out of the village with a serious negative impact on the pub.

However Eltisley is a great community to be part of and the church is regarded warmly by many although not reflected in our Sunday congregations. Some volunteers on our various rotas (churchyard, clock winding, cleaning and flowers) seldom attend a service, but faithfully help in these practical ways. Most members of the community are supportive of our fundraising efforts (concerts, safari suppers, 100 Club, fetes etc) and in 2016 we were able to fund the installation of a toilet and small galley kitchen. This year we welcomed superfast broadband to the church and our ambition in the next 5 – 10 years is to repair the flooring and reorder the inside of the church. These improvements enhance our worship and will hopefully make the church building more appealing for use by other groups.

We currently have three services a month – two Holy Communion services, and one lay-led Breakfast Service. The Breakfast Service was an attempt to draw in young families - most children seem to have sport commitments on a Sunday – all the more reason to start the day with a good breakfast, we thought! The Breakfast Service has become our most well attended service though not the cohort we had expected. We continue to look for other ways to attract young people. The school holds festival assemblies in church and we have a monthly coffee morning.

We recently gained some land adjacent to the churchyard with the aim of creating a peaceful garden of reflection. Before embarking on the garden project the local History Society, along with Staploe Archaeological Group, carried out a dig to try and find the infamous “St Pandionia’s Well”. No well was found, but they did discover the remains of the old Rectory. We manage the churchyard, mindful of our responsibility to look after wildlife and increase biodiversity. Last year we acquired the Cambridgeshire Churchyard Conservation Bronze Award.

Individual PCC members hold volunteer roles in the Cade Pavilion, the school and the local GP Surgery which, as well as being personally fulfilling, helps the church remain central to village life. We tithe our regular income and have a policy of supporting local, national and international charities.

St Botolph's Church, Graveley, with St John the Baptist, Papworth St Agnes

The villages: Graveley is a village of 98 houses, one pub, no shops and no bus services. The village hall is the old village school, rented from the diocese. The parish includes Papworth St Agnes, a hamlet of 16 houses about a mile from Graveley, and has three working farms, a busy garage and some light industry with approximately 300 residents of all ages from all walks of life and social backgrounds.

Church and community: The dozen regular churchgoers are supported by at least the same number of people who maintain the church and churchyard, but rarely attend services. Volunteers organise morning coffee on the first Thursday of each month in the village hall, usually supported by some 30 people who give generously to the church. More people support the church than attend our services! The busy pub is the heart of the community and the publican is an active supporter of the church.

Church services: We celebrate the Eucharist on the first Sunday of the month and have morning prayers on the third, with an average attendance of 10 to 12 parishioners. Easter is celebrated, of course, and Christmas Mass is taken on Christmas Eve. A recent increase in the number of children has prompted a Christingle service and the church joining the village Halloween trail. Remembrance Day, celebrated at a war grave and the memorials inside the church, is well attended - recognising the WW2 Pathfinder airfield on the edge of the village.

The church buildings: St Botolph's in Graveley dates from the 12th Century and requires constant maintenance; £50,000 is needed in the next few years. It has an unusually fine organ for a country church and boasts a rare set of original church bells from 1624 (and an enthusiastic team of ringers), the subject of a special service this year led by Bishop Dagmar. St John the Baptist in Papworth St Agnes is looked after by The Friends of Friendless Churches, holding well-attended services at Harvest and Christmas.

The Trotter Trust: Henry Trotter was rector for 43 years in the 18th Century. He left land and monies in trust for the church and village, from which we still benefit. In particular, an annual grant subsidises our costs and the trust contributes towards building works.

In summary, Graveley is an old-fashioned community, where neighbours still look out for each other and practise Christian values, despite relatively few people attending services

All Saints and St Andrew's Church, Kingston

Kingston has a population of approximately 240 with about 80 households in the village with another 10 at Kingston Wood and Wimpole Road, Arrington. Most of the population are young families with children; about 25% are retired. Once an agricultural community, today there is a diversity of income, employment and outlook. Most people work in Cambridge or further afield. The average house price is £500,000.

During the second half of the last century Kingston lost most of its amenities including its school, shop, post office, chapel and public houses. There remains a Village Hall and the parish Church. Children now go to Bourn Church of England Primary Academy and Comberton Village College; many are educated privately. There is at present no Sunday School. A Kingston Church and Parish Magazine is published by the PCC, with the support of the Parish Council, and distributed to all households.

In December 2023 the PCC successfully completed a major programme of repairs to the fabric of the Church, including a new nave ceiling, a new south aisle roof and repairs to the south clerestory windows, which cost £140,000 with grants from several charitable trusts. A new chalice and paten were commissioned in 2023 to replace the church's 16th century vessels which were stolen in 2022.

The church electoral roll stands at 20: this has fallen over the past decade as older members of the congregation have left the village or died. PCC membership is now only four members with the offices of churchwarden and PCC Treasurer currently vacant.

The pattern of worship at Kingston used to consist of three services per month. However, with a significant decline in attendance more recently, particularly since the pandemic, it has been decided to reduce provision of worship to a single Family Service each month.

The church is largely funded by a Gift Aid scheme and dividends from an Endowment Fund, established in 2015. While regular church giving has declined, Gift Days have proved successful in raising funds.

Over the past ten years the church has hosted several successful concerts and other artistic events, the PCC having committed to extending the use of the church, which has excellent acoustics. Since 2022 Harcamlow Music has organised seven concerts of baroque music.

All Saints Church, Knapwell

All Saints Church Knapwell is a Grade 2* listed building with a 14th century tower and Victorian nave set in a small rural village of approximately 100 residents.

The church is the only public building in the village and hosts parish meetings as well as fundraising and social events. It is situated just off the village High Street alongside a path through mature woods used by ramblers and dog walkers.

The PCC has made a successful priority of providing a warm welcome to passing walkers and visitors, leaving the church unlocked whenever possible. Two services are held each month - a sung evensong (the church is fortunate to have an organist in the PCC) with an average attendance of 9 including supporters from nearby parishes and a Holy Communion with an average of 6 in the congregation.

The church is supported by a long standing, dedicated and enthusiastic PCC with help from villagers who assist in organising fundraising events and keeping the churchyard well maintained. PCC events such as coffee mornings, a summer party and garden plant sales are held regularly to engage the local community and raise funds. No specific young people's events are currently organised though with more children now in the village this could be a future priority.

A few years ago, the parish's finances were just breaking even each year but now, following fundraising initiatives and generous donations the bank balance has a healthy surplus. The main financial challenge facing the PCC at present is the need to fundraise for repairs to the wall of the organ chamber which is very unstable following subsidence. The wall is currently being stabilised by temporary wooden buttresses. The church architect has estimated that £100,000 is needed for the repairs and so far approximately £14,000 has been raised by the PCC from fundraising events, a Friends of Knapwell church group and generous donations by villagers and visitors. Architect's fees have already been paid for the project and the latest quinquennial inspection raised no major concerns apart from the repairs needed to the organ chamber.

All Saints Church, Lolworth

All Saints Lolworth primarily serves a small, rural parish of about 160 residents, with some regular congregation members from nearby villages. The church building is open every day during daylight hours and visitors are welcome.

According to the village plan of 2022, 10% of the respondents attend church frequently and another 40% attend occasionally. The majority of residents believe it is important to maintain the Church for rites of passage and almost 30% use it as a quiet space. 87% would like to see the building used more widely. Accordingly, we have recently begun using the church for occasional musical events, attracting both residents and others beyond our community.

	Very important	Important	Not important
Baptism	39%	52%	9%
Marriage	42%	52%	6%
Funerals	52%	42%	6%

The church has a beautiful set of Stations of the Cross and a restored chamber organ dating from 1845, played by volunteer organists.

The churchyard is well maintained and open. Working parties are mustered on a semi-regular basis drawing on the 46% of residents who volunteered to help in the village plan. A significant number of residents and walkers from further afield sit and enjoy the peaceful environment or walk their canine companions along the church path.

The church brings the community together hosting events such as Harvest Festival, Easter Services, a Christmas Carol Service, as well as a Christmas Fayre, Open Gardens, Coffee mornings, Plant and Home Baking Sales. Income and donations from these services and events is used to support our annual running costs but also importantly to make donations to local charities such as foodbanks and care for the terminally ill.

Some events are held at the Village Hall to encourage involvement of those residents who have affection for the church although they do not attend regular services. PCC members, including our “assigned” vicar, are fully involved with all aspects of village life including being trustees of the Village Hall and members of the Town Acre charity as well as the Village Club. Lolworth has a Parish Meeting rather than a Parish Council and there is a standing agenda item for church activities to be discussed. This, with the aforementioned involvement in village activities, helps to cement the church as an integral part of our village community.

The PCC has addressed the urgent findings of our 2023 Quinquennial Report, including upgrading the electrical infrastructure. General maintenance tasks are on-going and up to date. Recent bequests will facilitate further works on the church and churchyard.

St Mary the Virgin Church, Longstowe

Longstowe has a population of about 200 people, and in many ways could be described as an “estate village” to Longstowe Hall, which for many years employed a large number of people. In the past 30 years the number of people working within the village has significantly reduced. However, over 50% of the houses are still either owned by the estate or are Social Housing. Nevertheless, St Mary’s is not an estate church.

The village is best described as a “ribbon”, rural development running along one street of about a mile, with a very small cul-de-sac. Our amenities are the Church, and the Village Hall adjacent to a magnificent cricket pitch and green.

The village is close knit and despite a small regular congregation of between 6 to 12 people, the rest of the parish is vocal as to what happens to the church! There is a very strong preference for using traditional language from the Book of Common Worship for our services. It is fair to say a more modern approach to services would not currently be welcome. Numbers attending swell considerably for church festivals.

There is a strong group devoted to the heritage of the church. The bells are a set of 8 Harrington tubular bells rung from an Ellacombe frame. The churchyard is very well visited. Historically fundraising for major projects such as stonework has been very good. Like many villages, our number of active volunteers is very small.

Given our history, 800 years plus (not now the original church, which was rebuilt in the 1850’s), our number of visitors through the doors is very heart lifting and very regularly recorded in the Visitor’s Book. The rebuilding of the church created a place that is ‘quite special’; couples see it for the first time and want to get married there!

We have very successfully welcomed people from outside the village to our Sponsored Horse Rides (we have a very large church green with a bridleway) and an annual Pet Service.

Our regular Christingle Service ceased two years ago because of lack of volunteers, drawing from Bourn Primary School.

Music events range from the choir of Selwyn College on a summer evening, to local quartets and other visiting groups. The acoustics according to an expert are excellent. The church has a good organ, and we have an enthusiastic local person pleased to play it.

We are very likely to be successful in gaining a faculty for heated seats which will encourage us to consider Film Nights to draw in more people.

During Covid the main church was used for parish council meetings because of the size of the building.

St Peter's Church, Papworth Everard

Papworth Everard has by far the largest and youngest population of the villages in the Papworth Team. In 2021 the village population was 3,840, 68.6% aged between 15 and 64 (compared with a national average of 64.1%). The village continues to grow and now accounts for approximately 50% of people living in the Team.

From small beginnings, the village grew significantly in the 1920s and 1930s with the establishment of the TB clinic and settlement, and the foundation of the world leading heart and chest hospital. In the 1940s the work of the TB settlement passed to the disability charity, the Papworth Trust and its land-owning arm, the Varrier Jones Foundation. After 100 years in the village, the Papworth Hospital moved to a new hospital at Addenbrookes in 2018. This 20th Century history of Papworth has left an important physical and emotional impression on the village. From a time when at least 75% of housing in the village was social rented housing, we have seen a period of large-scale private housing development over the past 25 years or so, resulting in a drop to 25% of the housing stock now being social rented. There is still a significant number of disabled and vulnerable people living in the village.

The medieval church of St Peter attracts a faithful and friendly congregation of between 20 and 30 regular worshippers, swelled considerably on such occasions as Remembrance and Christmas. We have a lay led Family Service once a month and Holy Communion Services on two other Sundays in the month usually officiated by retired clergy who have no role in the village during the week. Many from the congregation attend other churches in the Team when there is no service at St Peter's.

The vicarage in the village was sold in 2017 when the Team Vicar moved to a new vicarage in Bourn. As the largest village in the Team, the parish would like further consideration as to whether, in the future, a member of the clergy could be based in the village.

The PCC received the latest Quinquennial Inspection Report in July 2024 and is now working through the urgent items that have been identified.

The village supports a range of services and facilities, including a busy surgery and pharmacy, a public library, a co-op store, a hair salon and two cafés. The large village hall is the venue for many village clubs and local events as well as being used by the church on occasions. The extensive playing fields in the centre of Papworth are well used throughout the year.

The Primary School in the village has the capacity for 420 pupils. Importantly, there is also a Children's Centre on the site. To date, efforts by the church to engage with the school or with young families in the village have had only limited success.

St Michael's Church, Toseland

Toseland is a small but charming rural village with a gem of a church which has been lovingly cared for by generations of faithful villagers. The village consists of one street and the church of St Michael and All Angels is situated behind houses on the north side of the High Street - so you need to keep your eyes peeled! The church is a Victorian rebuild of a 12th century building retaining some Norman features from that church. At a recent quinquennial inspection, the architect described our church as the best-kept in Ely Diocese!

Our village consists of 41 houses with about 90 residents, of mixed ages. We have 10 on the church electoral roll. The two organizations within the village are the Parish Council and the PCC but the village as a whole holds a number of social events and it is a strong community.

As the one remaining public building in the village, St. Michael's is used by the Parish Council for meetings, community events and as a polling station, in addition to worship services.

We hold one service a month, which is an evening 'Songs of Praise'. The congregation has recently grown, partly through the influence of our enthusiastic organist, to a regular attendance of 20 or more. This includes a small choir who lead the hymn-singing and occasionally offer a more challenging piece of music for the congregation to enjoy. At festivals a good proportion of the village population is found in church!

The building is actively maintained, with recent external stonework and roof repairs completed. Day-to-day maintenance and grass cutting is handled by villagers, not all of whom are church-goers. There are active plans to install an improved heating system soon. There is a composting toilet in a separate structure in the churchyard, all built by the locals.

We have had no churchwarden in Toseland for several years now, but the duties have been carried out by a dedicated and capable group of congregation members.

Although the financial situation is challenging, the congregation has always succeeded in paying its parish share.

Holy Cross Church, Yelling

Yelling is an attractive, linear village surrounded by farmland, with just over three hundred inhabitants of which twenty six are on the electoral role.

There is no shop, school or public house, but the village does have a well-used Village Hall and Social Club. A large barn opposite the church is used as an events' venue, including weddings, so attracting couples to marry in the Church and attending services beforehand. The former Baptist Chapel is now regularly used by the Cambridge Pentecostal Church.

The Church of the Holy Cross is a well-cared for medieval building with a large churchyard, still open for burial and a memorial garden for the interment of ashes.

We celebrate two regular services a month, a Family Service at 10.30am and Holy Communion at 9am. There is a good keyboard and a visiting organist, though we sometimes use CDs. There is no choir. Our regular congregations are small (8-12) but Festival Services – Harvest, Remembrance, and the Carol Service - attract many more villagers and are followed by refreshments, as is our regular Family Service.


Children are encouraged to attend Family Services, where activities are provided, and the Christingle Services and Easter Fun Day are particularly well supported as was a recent Pet Service. Charitable donations are made for instance to the British Legion, the Children's Society, the local Foodbank and the RSPCA.

Every other year we put on a magnificent Flower Festival, which has a very good reputation in the area and beyond, raising a substantial portion of the Church's regular income. We also hold a Fete in alternate years, a highly successful annual Plant Sale and evening events in the Barn.

The village supports the Church in many ways being notable for the large number of volunteers who contribute to the Church's life, plus helping with maintenance on a regular basis, whether they are church goers or not. There are for example, 30 people on the mowing rota and 22 on the flower rota, spreading the workload.

The PCC is currently embarking on a project to carry out some substantial vital repairs further to the Quinquennial report and will be fundraising even more seriously in the coming months.

Although a small parish, we are supported at all times in the Papworth Team.



Appendix 1: The Team Instrument

PASTORAL MEASURE

TO ALL PERSONS TO WHOM THESE PRESENTS SHALL COME WE STEPHEN BY DIVINE PERMISSION LORD BISHOP OF ELY SEND GREETING

Whereas:

- 1) By a pastoral scheme dated 1st July 2000 made by the Church Commissioners and confirmed by Her Majesty in Council, provision was made for the establishment of the Team Ministry for the area covered by the parishes of Bourn, Boxworth, Caxton, Croxton, Elsworth, Eltisley, Graveley with Papworth St Agnes, Kingston, Knapwell, Longstowe, Papworth Everard, Toseland and Yelling.
- 2) This Team Ministry known as the Papworth Team Ministry situated within the Diocese of Ely, the Archdeaconry of Cambridge and the Rural Deanery of Bourn.
- 3) The said scheme came into operation on the twentieth day of November in the year of our Lord two thousand.
- 4) By the said scheme authorisation was given to provide for the establishment of a Team Council to govern the workings of the Papworth Team Ministry.
- 5) Now by a pastoral scheme dated made by the Church Commissioners provision was made for the incorporation in the same Team Ministry for the area covered also by the parishes of Conington and Lolworth, which parishes also became part of the benefice of Papworth.
- 6) Having consulted again with the Parochial Church Councils of the constituent parishes of the enlarged Team we make further and revised provision as hereinafter appears:

Now therefore we do by these presents and in exercise of Our powers pursuant to Declare as follows:

- a) The Annual Parochial meetings of the parishes of the Papworth Team Ministry shall in each year elect one parishioner to serve on the Team Council, according to the schedule of Elections hereby affixed. In the conduct of these elections the provision of the Church Representation Rules shall apply. Parishioners duly elected shall serve for a term of three years after the revised Schedule has come into operation. All parishioners on the electoral roll of each parish shall be eligible for election to the Team Council. Election to the Team Council will also constitute election to the relevant PCC.
- b) The Team Rector, team Vicars and other licensed clergy (stipendiary and non stipendiary) and Licensed Lay Ministers ministering within the area covered by the Team Ministry shall also be members of the Team Council.
- c) The Team Council shall meet for a minimum of two times a year. The Team Rector shall be ex-officio Chair of the Council. A Lay Vice-Chair, Secretary and Treasurer shall be appointed from among the elected members.
- d) Minutes of the Team Council meetings must be recorded and retained in a form agreed for that purpose and minutes circulated to members of the Team Council, and Secretaries of the constituent Parochial Church Councils.
- e) The Team Council must hold an Annual Meeting under the usual provisions of the Church Representation Rules. Independently inspected, examined or audited accounts of its financial dealings must be presented and approved by the meeting; and must be available for inspection by the constituent Parochial Church Councils. It must provide an annual report of its activities for circulation to all constituent Parochial Church Councils.
- f) The Team Council is ultimately responsible for the governance of all the constituent parishes of the Team Ministry but shall delegate the following powers to the Parochial Church Councils of the constituent parishes:
 - i) To maintain, care for and insure the fabric of the parish churches and any other property belonging to the church within the parish
 - ii) To authorise the form of Divine Service to be held within the parish church according to the provisions of the Canons of the Church of England
 - iii) To raise administer and control all finances relating to the parish and to provide annual audited or independently examined accounts of such finances at the Annual Parochial Meeting and to give an annual report of their financial situation and a copy of their accounts through the Team Treasurer to the Annual Meeting of the Team Council
 - iv) To work in conjunction with the Team Minister appointed to the parish by the Team Rector to provide for the pastoral, social and evangelistic needs of the parish
 - v) To submit a copy of the minutes of the Annual Parochial Church Meetings of each constituent parish to the Team Council.

Each constituent Parochial Church Council has the right to send resolutions to the Team Council which the Council must then consider at its next meeting.

- a) The Team Council shall be directly responsible for the following matters:
 - (i) Baptism, Confirmation and Marriage policy
 - (ii) Mission, outreach, evangelism and discipleship policy
 - (iii) All team communications and publications policy
 - (iv) Patterns of worship in the parishes of the Team
 - (v) The provision of officiants for all services within the Team Ministry
 - (vi) Safeguarding policy and its implementation
 - (vii) The preparation of a Team Budget for the administration of the Team, the working expenses of the clergy and other licensed ministers and other costs of ministry
 - (viii) Arranging the apportionment of the Ministry and Team Shares
 - (ix) Payment for all expense incurred by its responsibilities outlined in this section.

The Provisions of this revised Instrument shall remain in force for a period of ten years from the date given below.

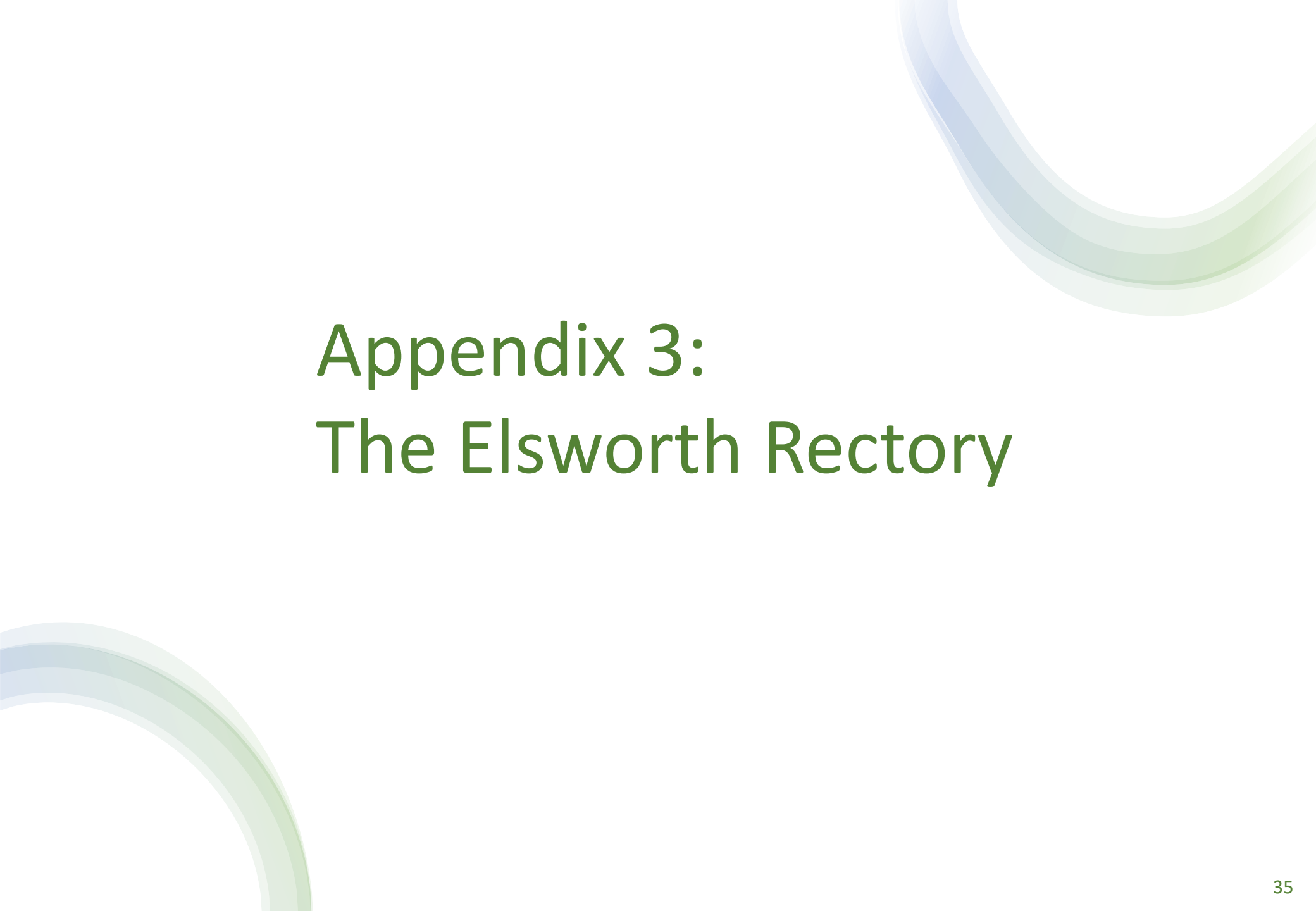
Given at Ely this day of in the year of our Lord two thousand and

+Stephen Elien



Appendix 2: Parish statistics

	Population 2021 Census	Electoral roll	Number of services each month	Holy Communion	Morning Prayer	Evening Prayer	Service of the Word / Family Service	Songs of Praise	Perceived change in 2024
				Average congregation					
Bourn	988	42	3	17	28		28		=
Boxworth	215	22	2	13	13				=
Caxton	600	25	3	12	13		11		=
Conington	138	14	2	16					-
Croxton	160	12	2	14	7				=
Elsworth	689	24	2	13		8			=
Eltisley	386	30	3	11			21		+
Graveley	276	21	2	12	10				=
Kingston	236	20	1	5			7		=
Knapwell	88	11	2	6		9			=
Lolworth	161	12	2	12	9		19		=
Longstowe	207	23	2	8	10		46		=
Papworth Everard	3840	31	3	24			25		=
Toseland	89	11	1					15	=
Yelling	323	26	2	12	16				=



Appendix 3: The Elsworth Rectory

The property consists of:

- Good-sized private rear garden.
- Large kitchen/diner, dining room and lounge.
- Dedicated office space in house.
- Double garage and driveway with parking for several cars.

Ground Floor

Entrance via double-glazed door to the large entrance hall. Off the vestibule is:

- Cloakroom
- Office space with triple aspect.
- Hall with stairs up to first floor and doors to the living room, dining room and kitchen.
- Kitchen/Diner, fitted with a range of wall, base and drawer units with complementary work surfaces over and room for a range cooker. There is room for a breakfast table in the area overlooking the back garden. There are windows to the front and back. From the kitchen there are doorways to the utility area and dining room.
- Dining room
- Lounge: triple aspect room with real fire and patio doors to back garden.

First Floor

On the first floor there are six bedrooms, of which there is a master bedroom with ensuite, two further doubles and 3 singles, a bathroom and an airing cupboard.

Heating

The house has oil fired central heating.

Outside

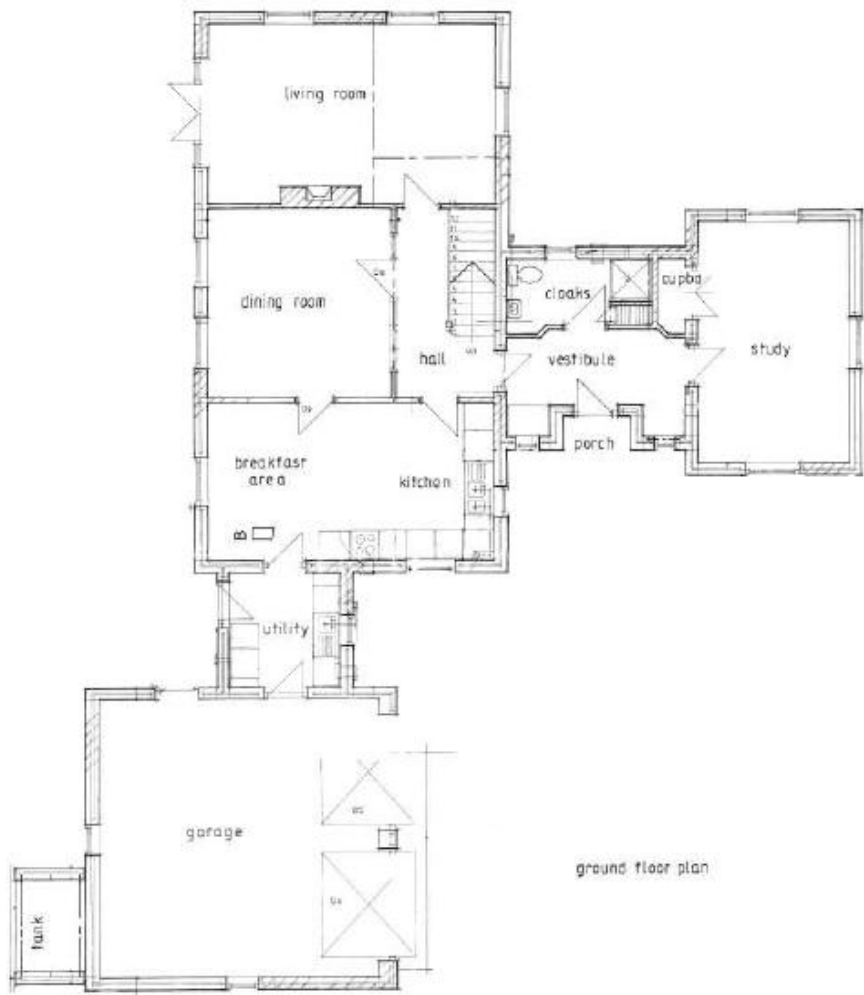
To the front there is a double garage with a room above (called the Upper Room– not shown on the plan in this document) which is accessed from the rear garden.

From the front there are two gates to the back gardens and an oil tank is situated behind the garage.

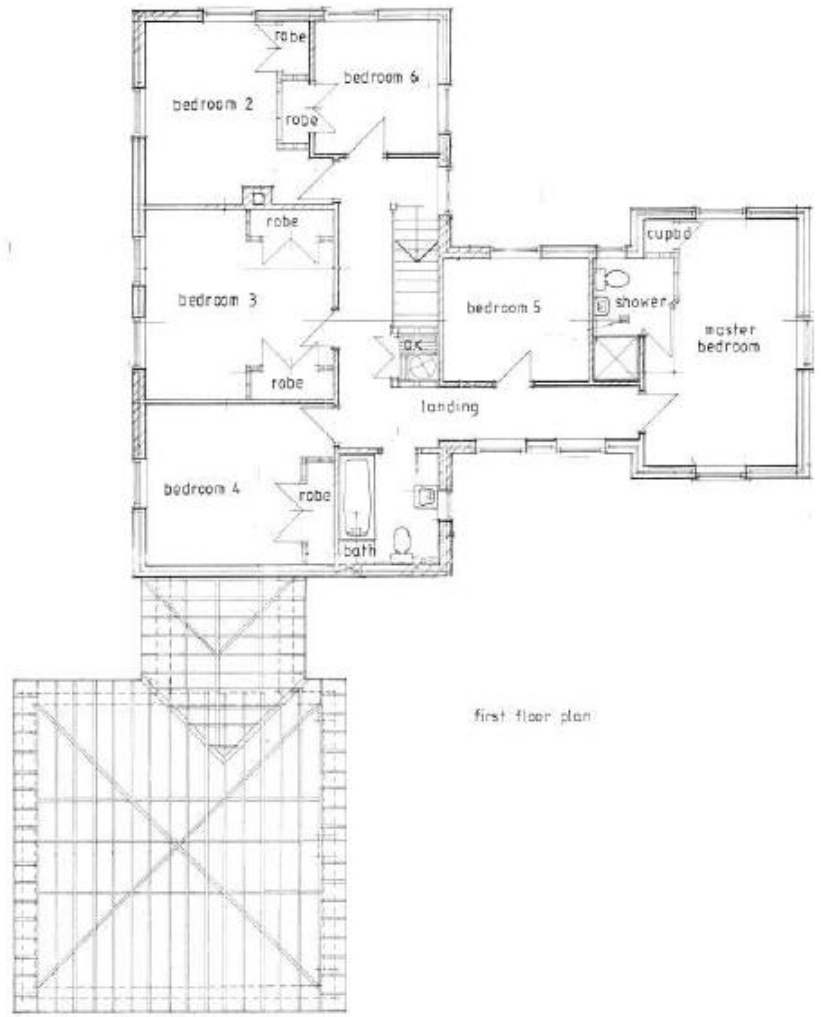
The driveway has parking for several vehicles.

There is a good-sized private rear garden with a glebe paddock attached which is currently used for church parking when there are team services.






ground floor plan



first floor plan



Appendix 4: The Team accounts

PAPWORTH TEAM MINISTRY

**INCOME & EXPENDITURE ACCOUNT
FOR THE YEAR ENDED 31 DECEMBER 2023**

	Note	2023		2022	
		£	£	£	£
Income					
Contribution from Parishes	1A	31,000		31,000	
Donations & Gifts		1,888		1,888	
Fees for Occasional Offices	1B	4,317		4,293	
Team/Cluster Services		792		293	
Outreach & Special Events	1C	1,866		1,878	
Sale of resources	1D	3,616		3,623	
Interest		512		42	
MS/Gift Aid Recovery	1E	300		342	
			44,291		43,360
Expenditure					
Ministerial Support					
Travel		5,687		5,494	
Fees -visiting clergy		1,210		1,040	
Telephone & Broadband		1,697		2,016	
Stationery & Postage		542		675	
Hospitality		1,222		1,174	
Books / Resources		252		161	
Robes		-		-	
Retreats / Training		314		-	
Team Council/Exec admin		-		-	
			10,925		10,560
Mission and Evangelism					
Outreach - general	2A	898		701	
Mission Resources	2B	250		257	
Pastoral Support	2B	200		262	
Regular Outreach - Rendezvous	2C	1,496		1,732	
Worship Support	2D	2,981		2,614	
			5,825		5,566
Administration & Technical Support					
Office Charges	2E	8,566		8,744	
Admin Staff		12,078		10,892	
Telephone / Broadband		796		828	
Stationery & Postage	2F	1,767		1,710	
Printing / Publicity	2G	3,537		4,452	
Equipment / IT development		-		-	
Bookkeeping		2,071		2,165	
Hospitality & special events		764		620	
Team purchases (incl resale)	2H	1,003		684	
Sundry expenses		-		-	
			30,582		30,094
Depreciation		65	65	80	80
			47,396		46,300
NET EXPENDITURE OVER INCOME			(3,106)		(2,941)

PAPWORTH TEAM MINISTRY

**BALANCE SHEET
31 DECEMBER 2023**

	Notes	2023		2022	
		£	£	£	£
FIXED ASSETS					
Office Furniture & Equipment	3A		300		365
CURRENT ASSETS					
Debtors & Prepayments	3B	8,685		7,884	
Cash at bank and in hand		54,991		55,424	
			63,676		63,308
CURRENT LIABILITIES					
Creditors & Accruals	3C	18,870		15,311	
Wedding Deposits		1,050		1,200	
			19,920		16,511
RESTRICTED FUNDS					
Rendezvous	3D	1,348		978	
Mission & Outreach		9,958		11,306	
Ministry Share Rebate		-		-	
			11,306		12,284
NET ASSETS			32,750		34,878
RESERVES					
Previous years General Reserve			34,878		37,014
Transfer from Restricted Funds	3D		978		805
Current Year Deficit			(3,106)		(2,941)
TOTAL RESERVES			32,750		34,878

A full set of accounts is available on request.

**INDEPENDENT EXAMINERS REPORT TO THE TEAM COUNCIL OF
PAPWORTH TEAM MINISTRY**

I report on the accounts for the year ended 31 December 2023 which are set out on pages 1 to 8 of the Financial Statements.

Respective responsibilities of the Team Council and the Examiner

The Charity's trustees are responsible for the preparation of the accounts. The Charity's trustees consider that an audit is not required for this year under section 144(2) of the Charities Act 2011 (the 2011 Act) and that an independent examination is needed.

It is my responsibility to

- examine the accounts under section 145 of the 2011 Act,
- follow procedures laid down in the General Directions given by the Charity Commissioners section 145(5)(b) of the 2011 Act, and
- state whether particular matters have come to my attention.

Basis of the Independent Examiner's Statement

My examination was carried out in accordance with the General Directions given by the Charity Commission.

An examination includes a review of the accounting records kept by the Charity and a comparison of the accounts presented with those records. It also includes consideration of any unusual items or disclosures in the accounts and seeking explanations from the management committee concerning any such matters.

The procedures undertaken do not provide all the evidence that would be required in a full audit and consequently no opinion is given as to whether the accounts present a 'true and fair' view and the report is limited to those matters set out in the statement below.

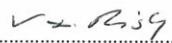
Independent Examiners Statement

In connection with my examination, no matter has come to my attention

1. which gives me reasonable cause to believe that in any material respect the requirements to keep accounting records in accordance with section 103 of the 2011 act, or, to prepare accounts which accord with these accounting records have not been met,

Or,

2. to which, in my opinion, attention should be drawn in order to enable a proper understanding of the accounts to be reached.


.....

Verity Risby
151 Caxton End
Bourn
Cambridgeshire
CB23 2ST

Date 29/3/2024

Contact

For further information please contact the Archdeacon of Cambridge,
The Ven. Alex Hughes (archdeacon.cambridge@elydiocese.org)